



# European Institute of Innovation and Technology

## Introduction

Dalibor Mladenka  
European Commission  
DG EAC, unit C1 - Innovation and EIT

# EIT | What is it?



- From student to entrepreneur
- From lab to customers
- From idea to product



## MISSION

- Contribute to the competitiveness of Europe, its **sustainable economic growth** and **job creation** by promoting and strengthening synergies and cooperation among **businesses, education institutions and research organisations**.
- Create favourable environments for creative thoughts, to enable **world-class innovation and entrepreneurship** to thrive in Europe.

## What is the EIT?

The European Institute of Innovation and Technology (EIT) drives innovation in Europe by supporting entrepreneurs, innovators and students across Europe to turn their best ideas into reality.

## How does the EIT work?



Trains a new generation of entrepreneurs



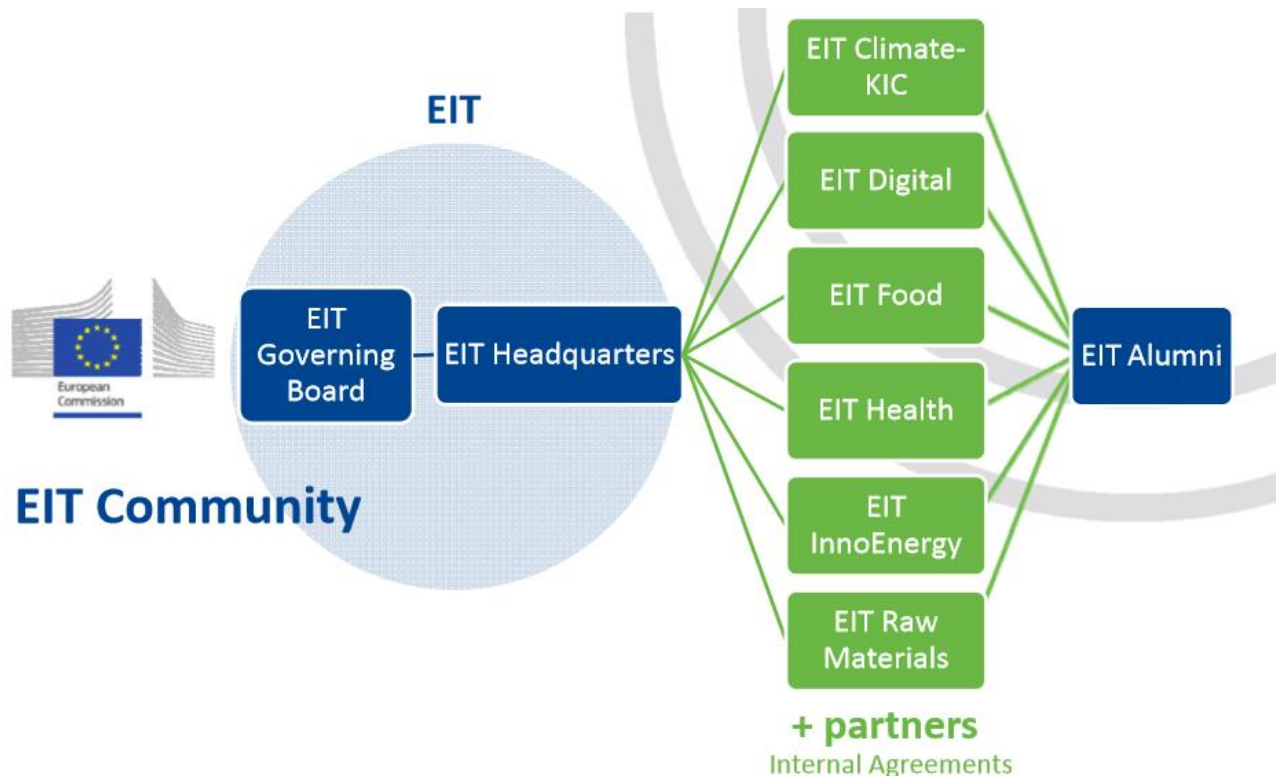
Develops innovative products and services



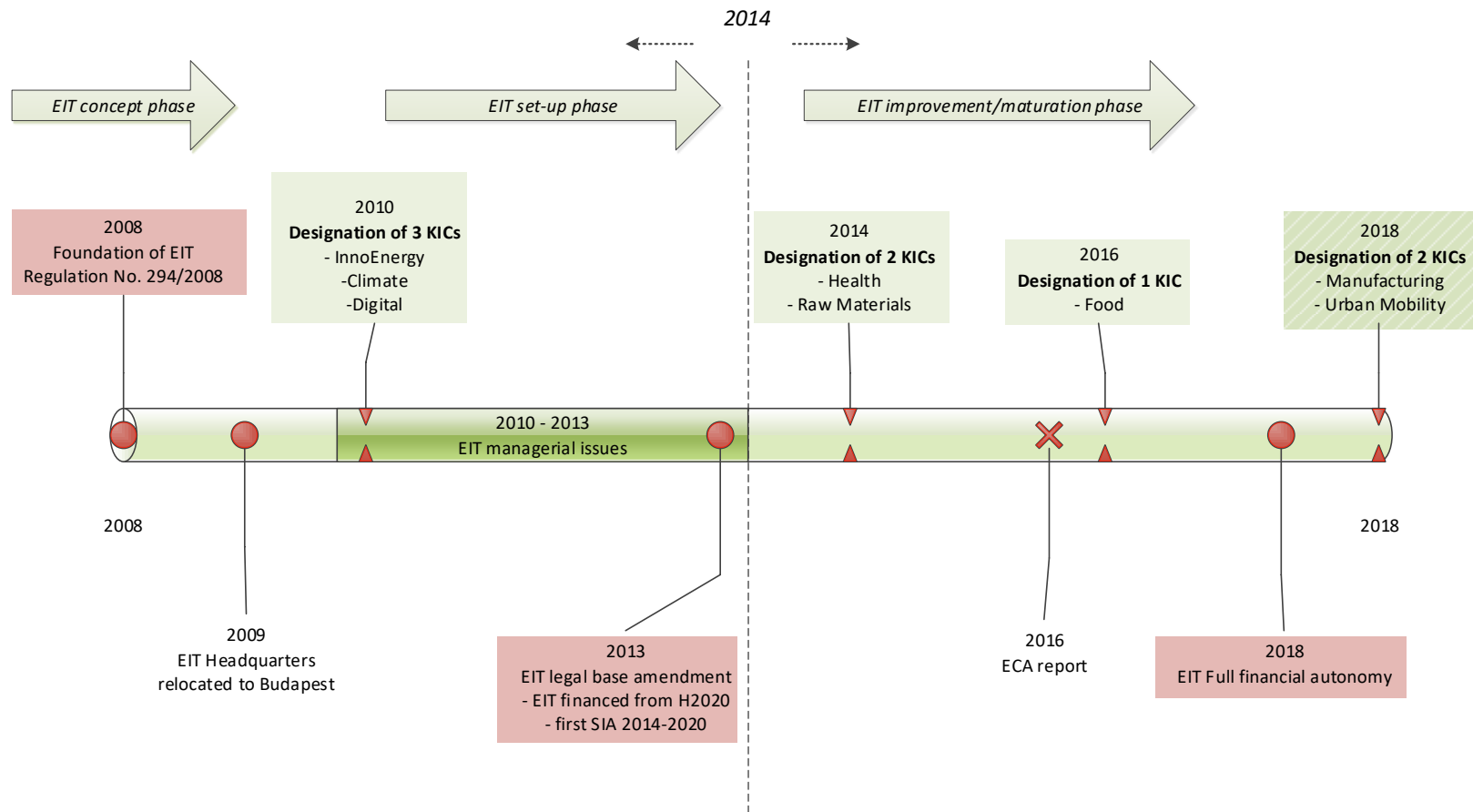
Supports start-ups & scale-ups

# EIT: what and how

- a dedicated Institute based in Budapest (**EIT**)
- **KICs** (Knowledge and Innovation Communities), with Co-Location Centres spread throughout Europe



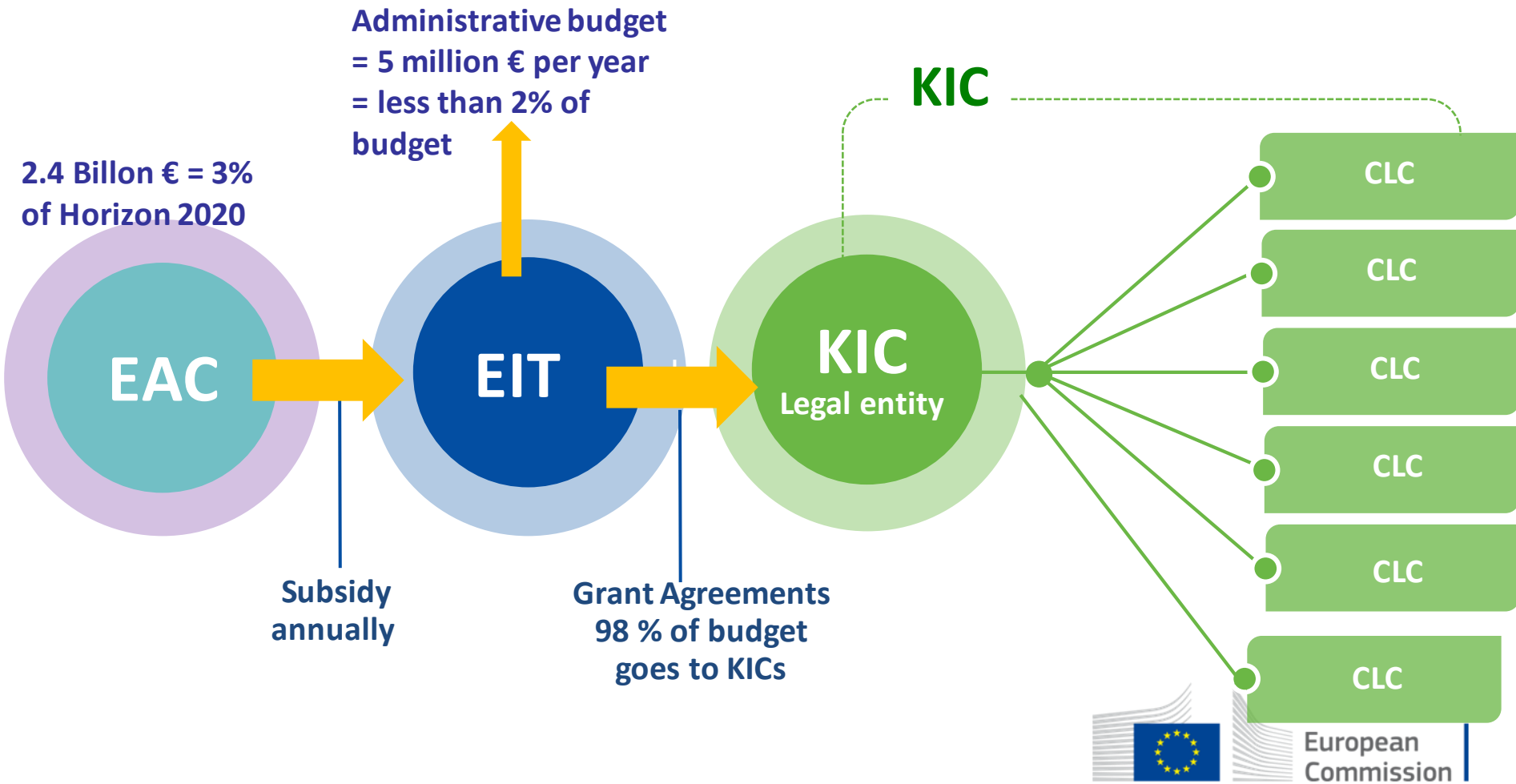
# EIT History



# KIC as legal entity

-

# key feature of the model



# EIT Knowledge and Innovation Communities



European Institute of  
Innovation & Technology

# The KIC model: *A business logic*

- ✓ High degree of integration: each KIC is an independent legal entity, gathering partners from across the knowledge triangle (Higher Education, Business, Research) based on a contractual partnership with the EIT.
- ✓ Long-term strategic approach: each KIC is set up for a minimum of 7 years to eventually become sustainable.
- ✓ Autonomy and flexibility: to determine organisational structure and activities governed by a Board of KIC partner organisations.
- ✓ The co-location model: each KIC consists of a number of innovation hotspots building and leveraging on local capacities (5-9 per KIC).
- ✓ Results & high impact oriented activities: 7 year Strategy and Annual Business Plan
- ✓ Financial sustainability

# Education and Training Activities



**Educating the next generation of entrepreneurs, innovators & change-makers**

## Key Characteristics:

- Linking education, research and business
- Learning by doing curricula and robust entrepreneurship education
- International, inter-organisational and cross-sectorial mobility

## EIT Education Portfolio:



### Master programmes

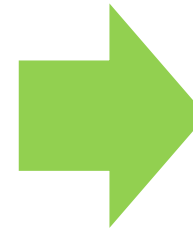
- International cooperation and industry involvement
- Mobility, internships and scholarships/ fellowships

### Doctoral programmes and schools

- Training on specific skills and competences
- Mobility, internships and scholarships/ fellowships

### Executive training & post-doctoral courses

- Continuous professional development courses (e.g. Climate-KIC Pioneers, Catalyst, Spotlight; EIT Health Campus Training for Professionals)
- Learning modules and MOOCs



**EIT Label**  
**A certificate of quality**

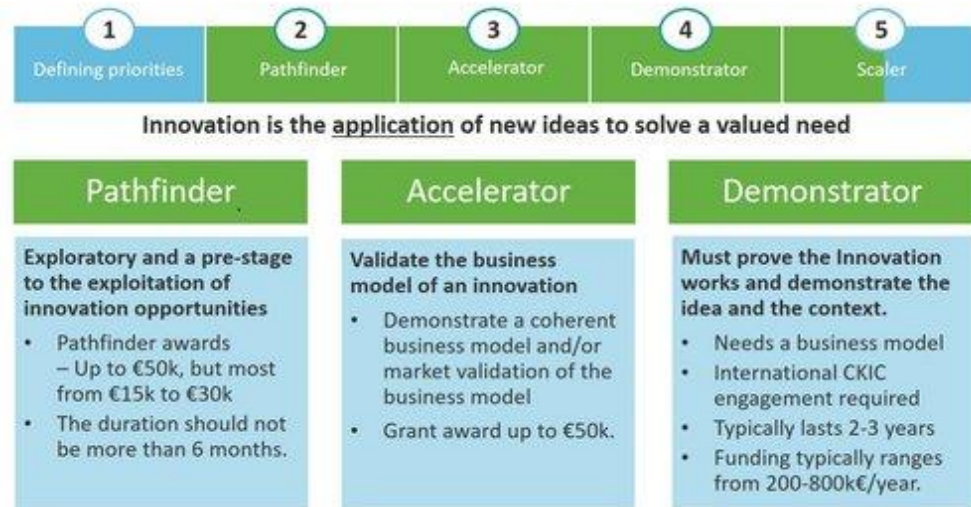




# Innovation Activities

- ✓ Support for finalising and commercialising technological innovations
- ✓ Aim is to develop products/services that address a specific business opportunity.
- ✓ Support is offered to **consortia**, as well as to **individual innovators**.
- ✓ Funding to demonstrators, pilots, proofs of concept, etc.

## Calls in Climate KIC Innovation Framework

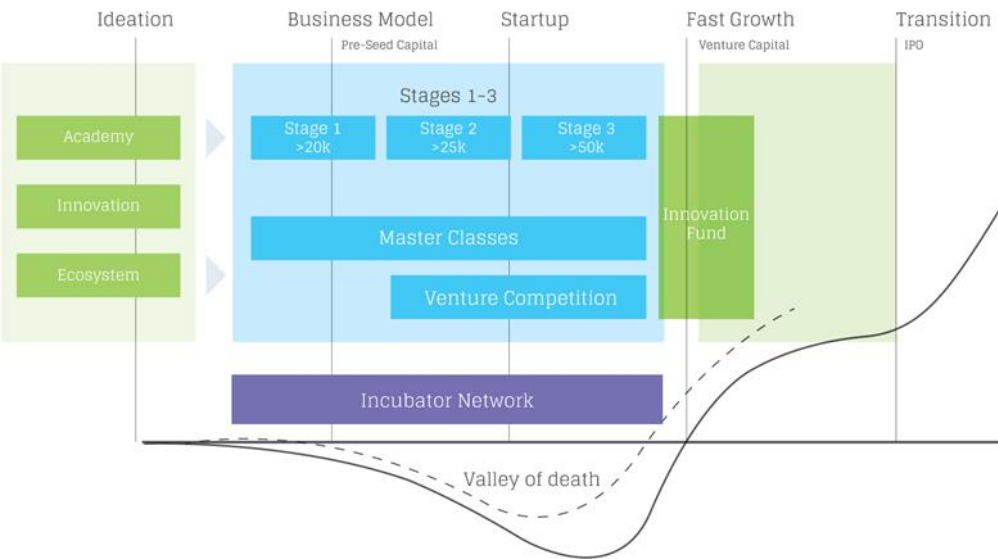


Transdisciplinary & multicultural teams working together on global challenges

New products, services, processes & business models for Europe

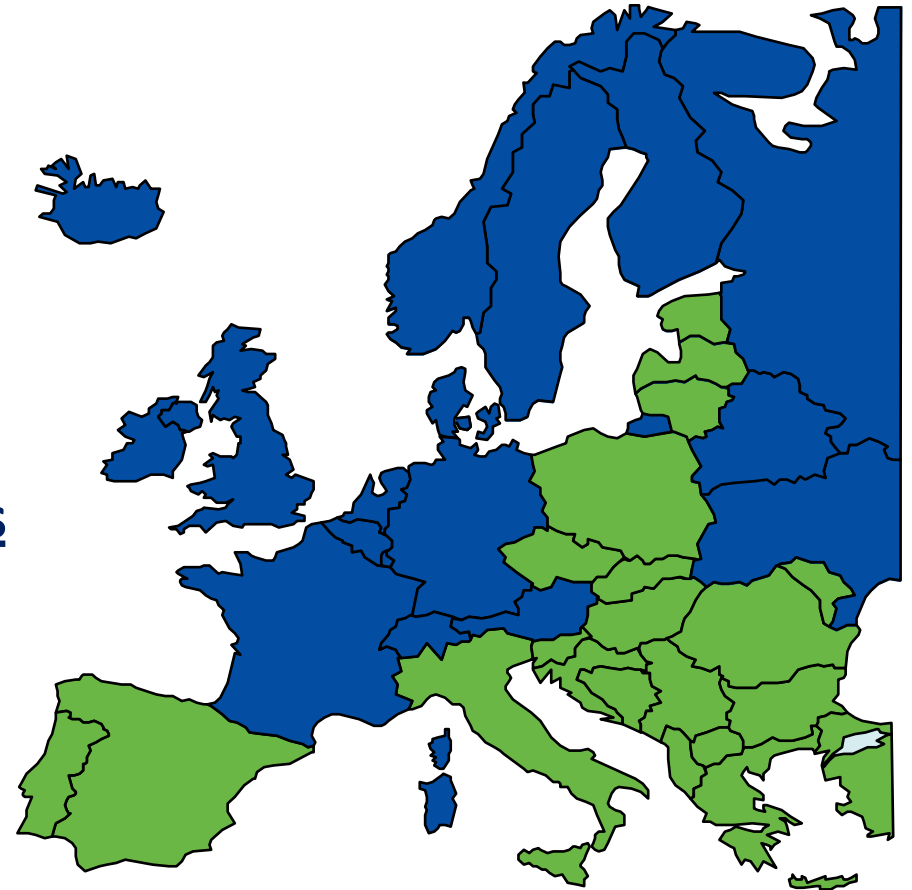
# Support to entrepreneurship and business development

- ✓ Range of **business support services** to help entrepreneurs **translate their ideas into successful businesses**.
- ✓ Services focus on areas such as support for **technology, market assessment, access to human resources, seed and venture capital**.
- ✓ Activities include business plan competitions, pre-incubation and incubation services, access to trainings, scale-up services



# EIT Regional Innovation Scheme

- Widening participation in Horizon 2020 and EIT
- Outreach scheme aimed at increasing innovation capacity in MS and regions not yet benefitting from the EIT and its KICs
- Recently, a new approach for 2018-2020 was launched
- Synergies with ESIF (in collaboration with JRC) are expected



# EIT CORE KPIS

Area	Outputs	Results/Impacts
Education	# Graduates from EIT labelled MSc and PhD programmes	# Start-ups created by Graduates from EIT labelled MSc and PhD programmes
Innovation	# Products launched on the market	# Start-ups created as a result of innovation projects
Business creation and acceleration	# Start-ups supported by KICs	Investment attracted by ventures supported by KICs
Dissemination and communications	# Success stories submitted to and accepted by EIT	# External participants in EIT RIS programmes
Institutional	<ul style="list-style-type: none"><li>• Budget Consumption</li><li>• Error rate</li></ul>	KICs' financial sustainability: revenue of KIC Legal Entity







# COVID-related measures



# EIT in Horizon Europe | SYNERGIES

- Each KIC is putting in place measures, solutions and actions to tackle the pandemic and its consequences
- Section on EIT Community COVID-19 Response  
<https://eit.europa.eu/our-activities/covid-19-response#ACTIVITIES>
- EIT issued a call for KICs, to mobilise **60 MEUR to support innovators and innovative start-ups, scale-ups and SMEs:**
  - 1) Pandemic Response Projects
  - 2) Venture Support Instrument



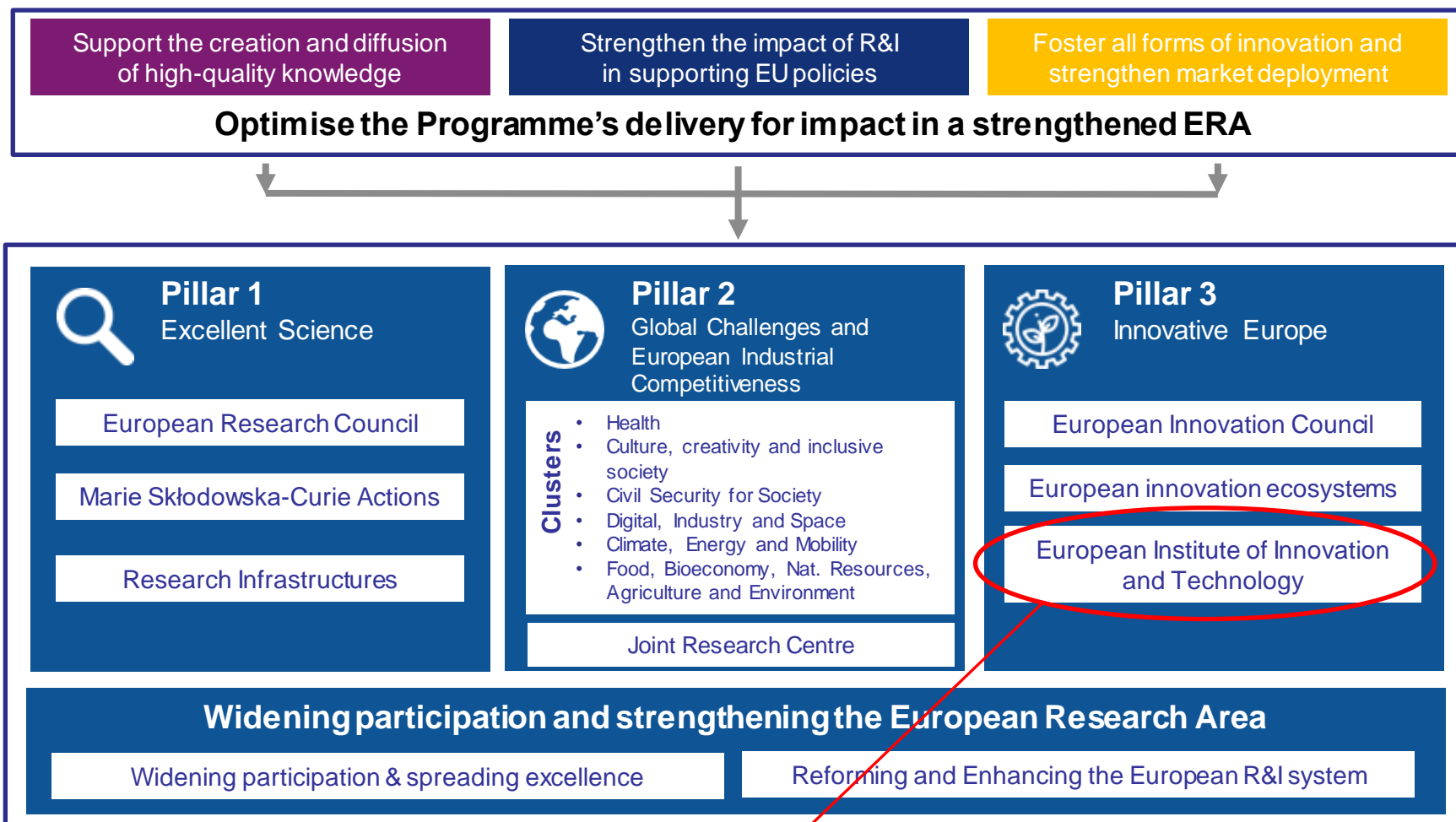
European  
Commission

# Outlook to the future



HORIZON 2020

# HORIZON EUROPE | Evolution, not Revolution



**Proposed budget: 3 billion EUR**



# EIT in Horizon Europe | SYNERGIES

## Synergies within Horizon Europe

- Innovative Europe Pillar (**Pillar III**)
  - EIC** – support most promising KICs'-backed companies for scaling up
  - EIT** – help create and support ecosystems by enhancing companies' access to talent, partners, innovation know-how, new market opportunities
  - EIT KICs** provide start-up and scale-up support
- **Pillar II** (clusters, missions, partnerships)
- **Pillar I** (MSCA, ERC, Research Infrastructures)
- **Widening participation and strengthening the ERA**

### Synergies with other EU programmes

- Erasmus
- Digital Europe
- Cohesion Policy Funds
- InvestEU
- Creative Europe
- Single Market Programme



# New EIT Regulation and EIT SIA



## **EIT Regulation:**

- Last revision in 2013
- Recast
- Principle-based approach



## **EIT SIA:**

- Article 17 of (present) EIT Regulation
- Coverage: 2021 – 2027
- Strategic direction | Key Activities |  
Priority fields | Financial needs

# Key changes in EIT Regulation and SIA (in line with the ex-ante Impact Assessment)



KICs' openness and transparency



KICs' funding model and post 15-years EIT-KIC relations



KICs' Regional dimension



Supporting the innovation capacity of higher education



Governance



New KICs

# KICs' Openness and Transparency

## BACKGROUND

Limited number of partners involved in the strategic and operational decision-making of the KIC

More transparency in KICs' selection process of projects and new partners

Communicate the selection results to the wider KIC community more efficiently

Measures ensuring more openness and transparency of the KICs:

- Common provisions for new members that add value to the partnerships
- Preparation of Business plans based on transparency and inclusiveness
- More calls open to third parties
- KICs' reporting on the involvement of new partners
- EIT monitoring role



# KICs' Regional Dimension

## BACKGROUND

KICs not well integrated into the local innovation ecosystems

Ensure consistency of KICs' strategies with local priorities

Ensure support countries and regions that lag behind in innovation performance

- Each KIC required to develop and implement a strategy - built on KIC's CLCs and RIS - to strengthen the relationship with regional and local innovation actors
- Enhanced impact through links to the relevant Smart Specialisation Strategies
- EIT RIS will become an integral part of the KIC' multi-annual strategy
- EIT RIS to represent at least 10% of the overall EIT support funding to KICs
- EIT to actively monitor the KICs' strategy implementation



# Supporting the Innovation Capacity of Higher Education

## BACKGROUND

Limited impact of the EIT education activities | low awareness of the EIT education brand

Links between education and innovation-support activities are not fully exploited

Improve the role and involvement of HEIs in local innovation ecosystems

- EIT SP intervention area: “Innovation and entrepreneurial skills in a lifelong learning perspective, including increasing capacities of higher education institutions across Europe”
- New action to develop HEIs into more innovative and entrepreneurial organisations
- Built on ongoing policy initiatives (like HEInnovate), in complementarity with relevant Horizon Europe activities (Pillar IV)
- use of the EIT Label by the participating HEIs
- EIT to play a steering and coordination role in the implementation and monitoring of the activities by the KICs
- Support to HEIs in low innovation performing regions



# Launch of New KICs



Other new KICs could be selected in case additional budget would become available



# Thank you

[https://ec.europa.eu/education/policies/innovation-in-education/the-european-institute-of-innovation-and-technology-eit\\_en](https://ec.europa.eu/education/policies/innovation-in-education/the-european-institute-of-innovation-and-technology-eit_en)

<https://www.facebook.com/EITnews>

<https://www.linkedin.com/company/european-institute-of-innovation-and-technology---eit>

[eit.europa.eu](http://eit.europa.eu)

#EITeu